

DAN MCTAVISH
SELECTED WORK 2007-2010





DAN MCTAVISH

Candidate for Bachelor of Architectural Studies Honors, Co-op Program
Faculty of Engineering, University of Waterloo

208 Glenforest Road
Toronto, Ontario
M4N 2A2
Canada

Mobile. +1 226 339 8150
Home. +1416 487 8734
Email. dmctavis@uwaterloo.ca

CONTENTS

REFERENCE LETTER	Page 4
RESUME	Page 5
TWOFOLD	Page 6
MINISTRY OF CULTURE	Page 14
RARE SPACE	Page 22
RARE SITING	Page 30
VILHELM LAURITZEN ARCHITECTS	Page 38
HOLSCHER ARKITEKTER	Page 44
KUWABARA PAYNE MCKENNA BLUMBERG	Page 48

The Marbel Arch, London Dan McTavish (Cover)
Carlsberg Hotel Vilhelm Lauritzen Architects (Opposite Page)

August 5, 2008

To Whom it may Concern,


I am writing this letter of reference for Dan McTavish to support his application for employment with your firm.

I have known Dan for the past year, both in my capacity as an Assistant Professor of design at the University of Waterloo School of Architecture, and as a partner in the firm RVTR which is the professional partner for an experimental housing project entitled ‘North House’ on which Dan has been collaborating. In both situations, I have continually been impressed with Dan’s insight, design capabilities, and the unusual level of commitment and responsibility that he has shown in executing both design and coordination work well above the level of his peer group. In addition, I can attest to Dan’s convivial and collaborative character, both in my experiences working with him one-on-one, and having observed his outstanding performance in team - based situations.

It is unusual that I would be able to write such a glowing description of a student, in terms of his capabilities and contribution in team situations, but in this case, both are entirely justified. I am certain that if you were to engage Dan to participate in your firm’s environment, that you would be as impressed and pleased with the results of his efforts as I have been. He has truly been a pleasure to work with.

In the event that you would like to discuss Dan’s abilities or details of his performance with me any further, please do not hesitate to contact me directly at either email: geoff@rvtr.com, or my mobile: + 1 416 219 5255

Sincerely,



Geoffrey Thün
MUD, BArch, BA(Soc), MRAIC, LEED AP™
Assistant Professor
University of Waterloo, School of Architecture
Director. RVTR

4

RESUME		
EDUCATION		
Candidate for University of Waterloo, Faculty of Engineering, Bachelor of Architectural Studies Honors, Co-op Program Cambridge, Ontario, Canada	September 2006 - Current	
WORK EXPERIENCE		
GALTstudio (Director and Cofounder) www.galtstudio.com twofold Scotiabank Nuit Blanche 2009	January 2009 - Present	
Vilhelm Lauritzen Architects AlmeneBolig+ Spark Housing Bratislava Carlsberg Hotel	May - August 2009	
Holscher Arkitekt Copenhagen, Denmark Svanevig Hospice Bigom Tankefuld Masterplan -Schematic Design -Design Development -Presentation Drawings -Physical modeling -Digital modeling	August - December 2008	
Kuwabara Payne McKenna Blumberg Architects Toronto, Ontario The Royal Conservatory of Music, Architectural Intern -Construction Documents -Design Development -Site visits for coordination and documentation -Physical modeling -Digital modeling	January - May 2008	
ACTIVITIES AND LEADERSHIP		
University of Waterloo, School of Architecture - Student Council - Vice President - President		2007-2008 Winter 2009 - Present
Art Gallery of Ontario - Advanced Youth Studio - Youth Council Member		2005 - 2006 2004 - 2006
Canadian Yachting Association - Junior Double-Handed Sailing Champion - World Junior Double-Handed Sailing Team		2004 2005
International Sailing Association Regattas - World Junior Sailing Championship I420 - Busan, South Korea - Kiel Week I420 - Kiel, Germany - World I420 Championship - Brest, France - European I420 Championship - Riva del Garda, Italy - Great Britain 29er Championship - Hayling Island, UK - World 29er Championship - Portland, UK		2005 2005 2005 2005 2006 2006
EXHIBITIONS + INSTALLATIONS		
Team North Solar Decathlon 2009: North House Exhibition Canadian Green Building Council “Shifting into the Mainstream Conference” -Design and build of podiums		2008
twofold at the 4th Annuual Scotiabank Nuit Blanche, Toronto, Ontario -People Choice Winner		October 2009
AWARDS		
School of Architecture 2B Oveall Design Award School of Architecture Innovation in Green Design/Technology For Natural Phase Change Material Wall with Paul Cohoon		Spring 2008 Spring 2008
PERSONAL TRAVEL		
-Monaco -London -Copenhagen w -Paris -Verona, Zermatt -Copenhagen, Oslo, Stockholm, Helsinki, Talon -Berlin, Budapest, Prague, Vienna		2008 2008 2008 2007 2005 2004 2003
REFERENCES		
Excellent references available on request, portfolio available at www.danmctavish.com		
5		

TWOFOLD

GALTSTUDIO

Now, more than ever, the question “What does it mean to dwell in a city,” is of critical importance.

Once, with the advent of the modern age, cities were seen as unsanitary and unhealthy due to the large factories located within them. It were these, along with many other factors, that lead to the suburbs rise in popularity as a “clean,” “spacious,” and “safe” alternative to the “dirty,” “cramped” and “dangerous” urban center.

Now, with new awareness of the environment and social issues, the city provides a sustainable solution to suburban living and the culture it has come to represent. As people flock to city centers around the world, particularly those in developing nations, politicians, planners, architects and citizens need to evaluate how land is being developed and to what end, as this precious commodity becomes more scares and thus more expensive economically and socially. Rather than creating “iconic” buildings, that often just fulfill a few peoples’ agendas, investment should be made in “infrastructure” that enables people to dwell in the city and makes dwelling better. What should be strived for is a performance based urbanism and architecture that questions and responds to how our built environment operates in relation to its surroundings (ecological, economical and cultural environments, occupants and other constructed fields ie. cities) in an attempt to make our built environment more sustainable, environmentally, ecologically, socially and economically. twofold, at Liberty Village, is an investigation of these and other issues related to the city, at the scale of public space.

Awards:
Zone C Scotiabank People’s Choice Award, 2009 Scotiabank Nuit Blanche





twofold, GATLstudio Megan Burke (Cover)
 Entry From Snooker Terri Meyer Boake (Current Page)
 twofold Terri Meyer Boake (Opposite Page)





windStorm DMT (Current)
twofold Interior Megan Burke (Opposite Page)





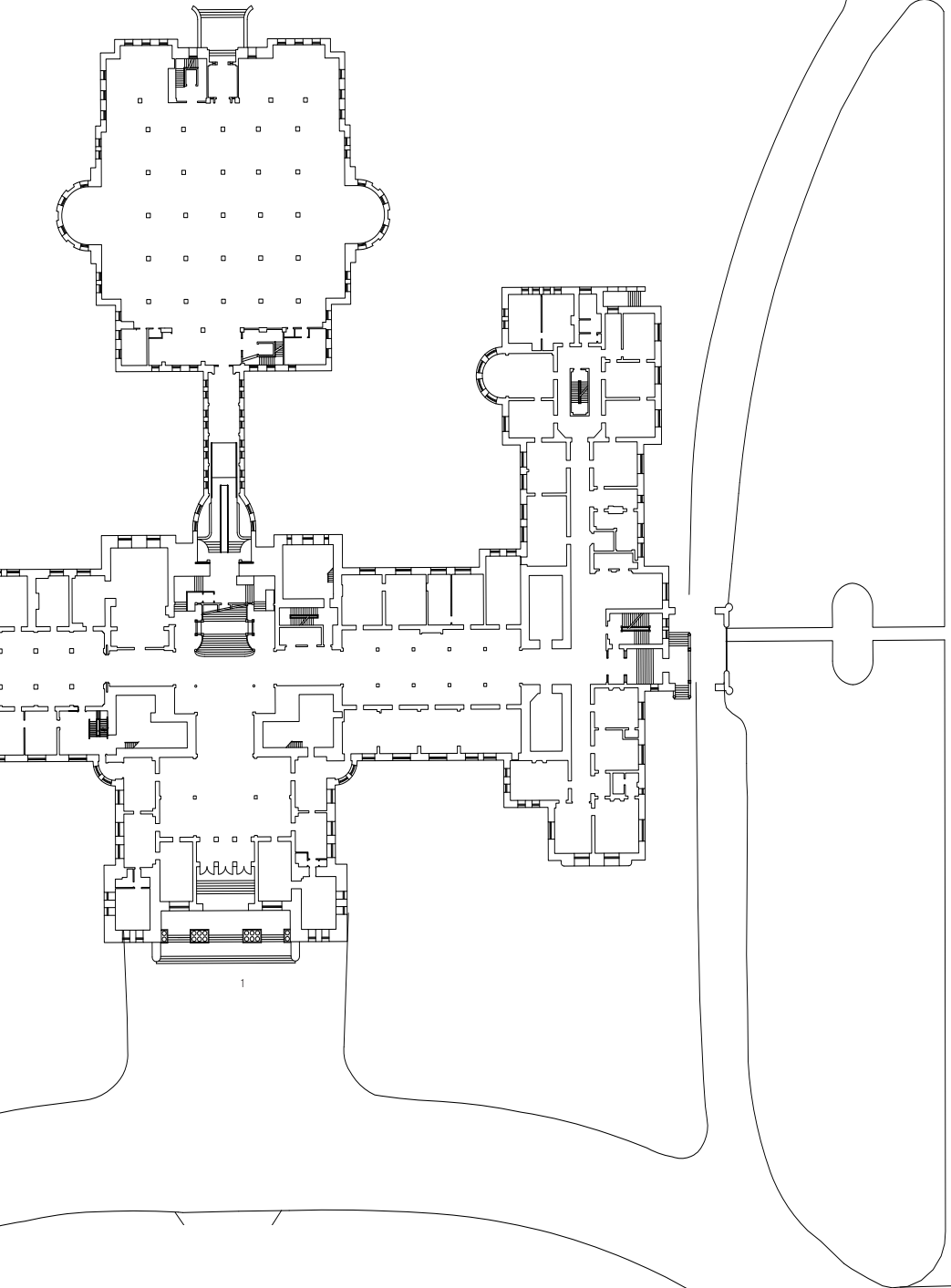
towfold Interior Megan Burke (Current)
hand Megan Burke (Opposite Page)

THE MINISTRY OF CULTURE

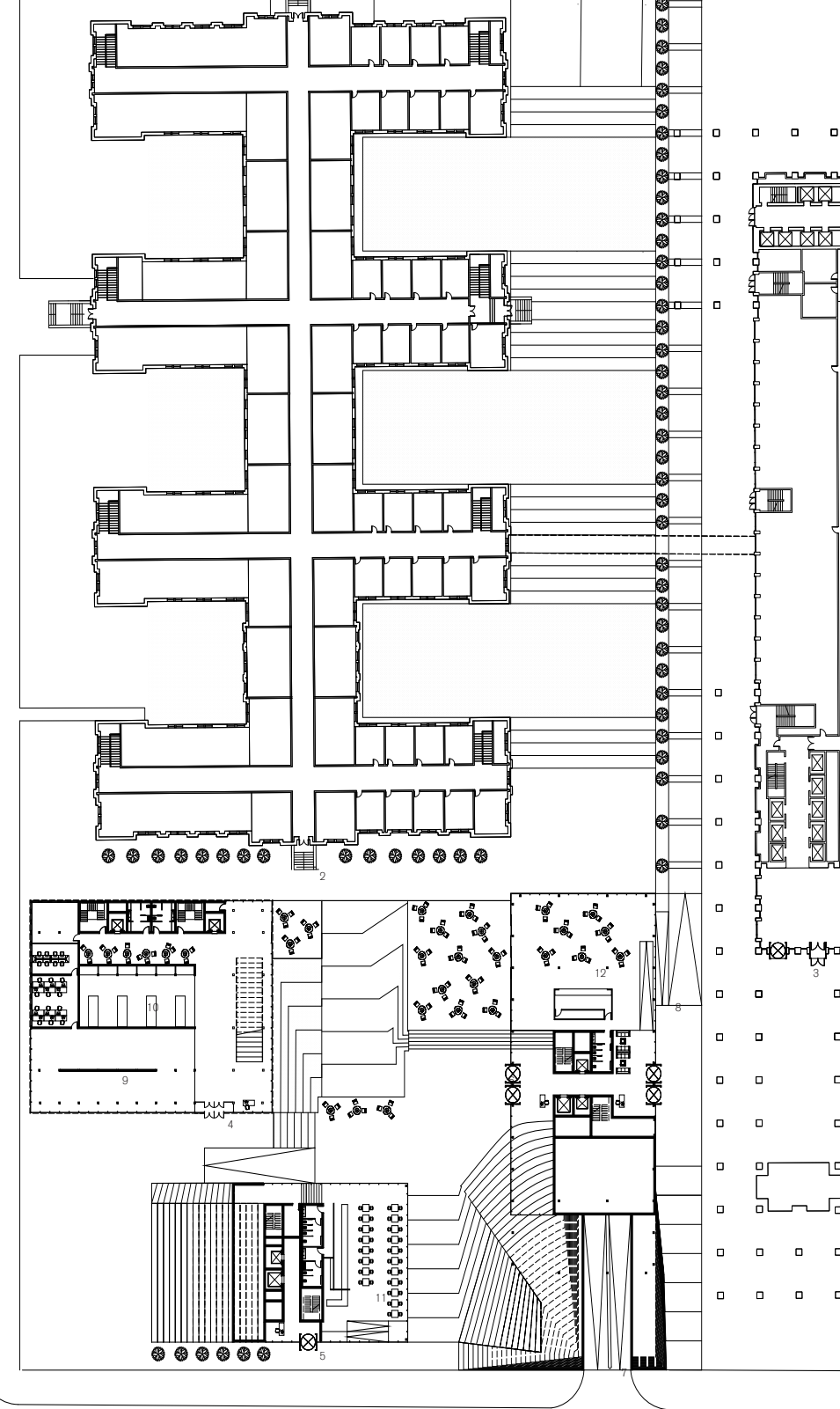
“Mat building can be said to epitomise the autonomous collective; where functions come to enrich the fabric, and the individual gains new freedoms of action through a new shuffled order, based on interconnection, close-knit patterns of association, and possibilities for growth, diminution, and change.”

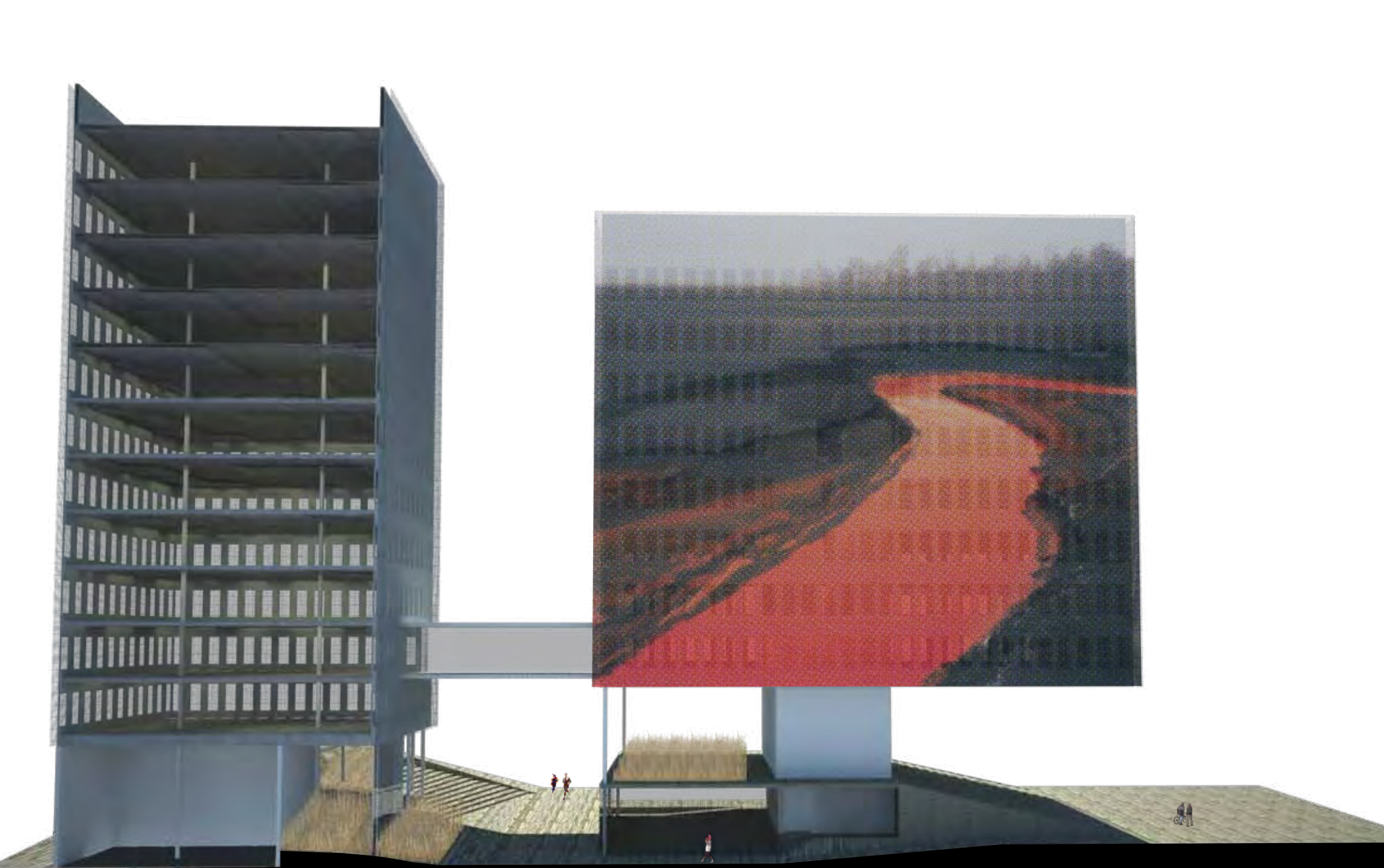
Alison Smithson



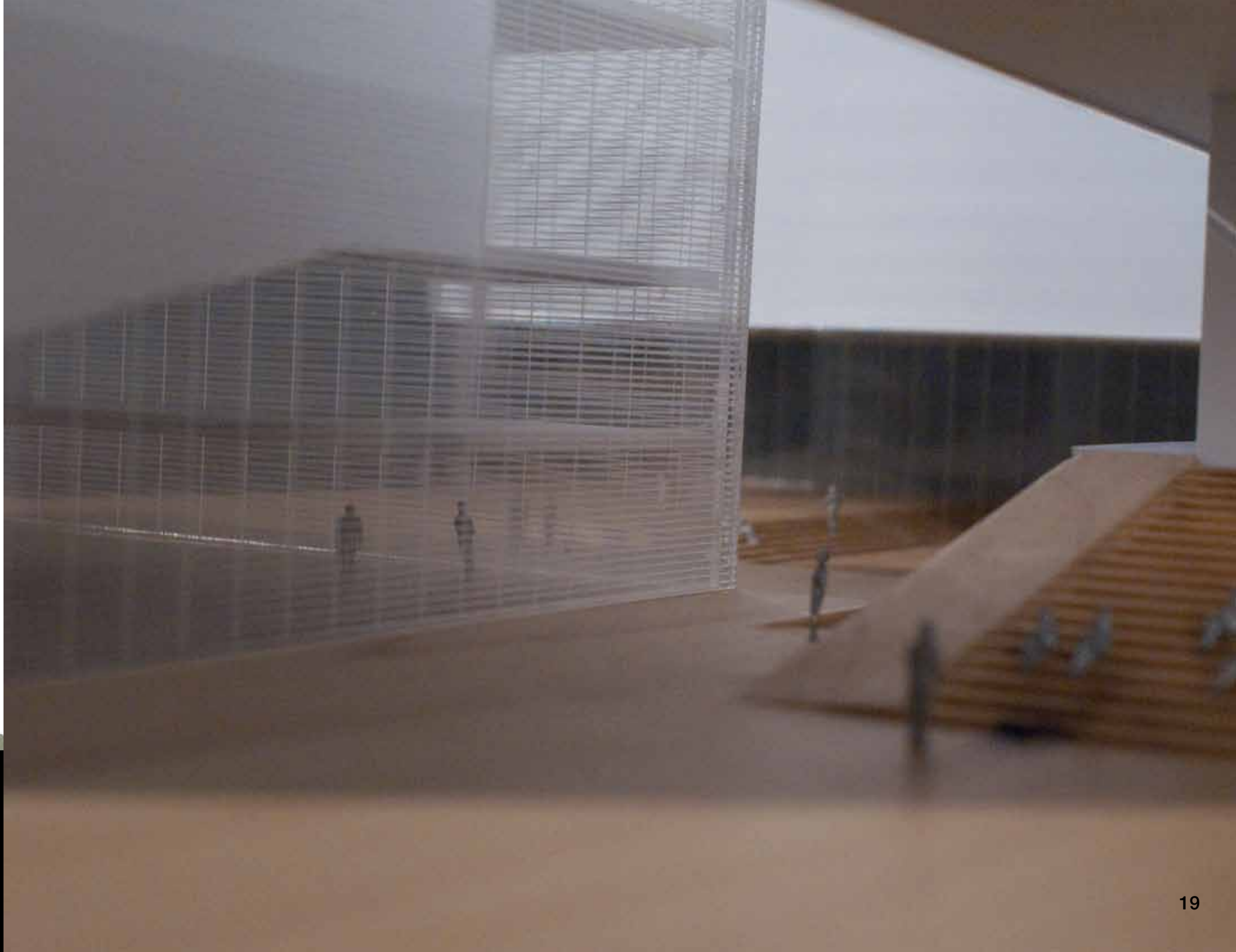


Exterior Rendering South West Corner (Previous Page)
 Ground Floor Plan (Current Page)
 1:250 Model Looking South into Courtyard (Next Page)





Sectional Rendering View South Through Courtyard (Current Page)
1:250 Model Looking North-East into Courtyard (Next Page)





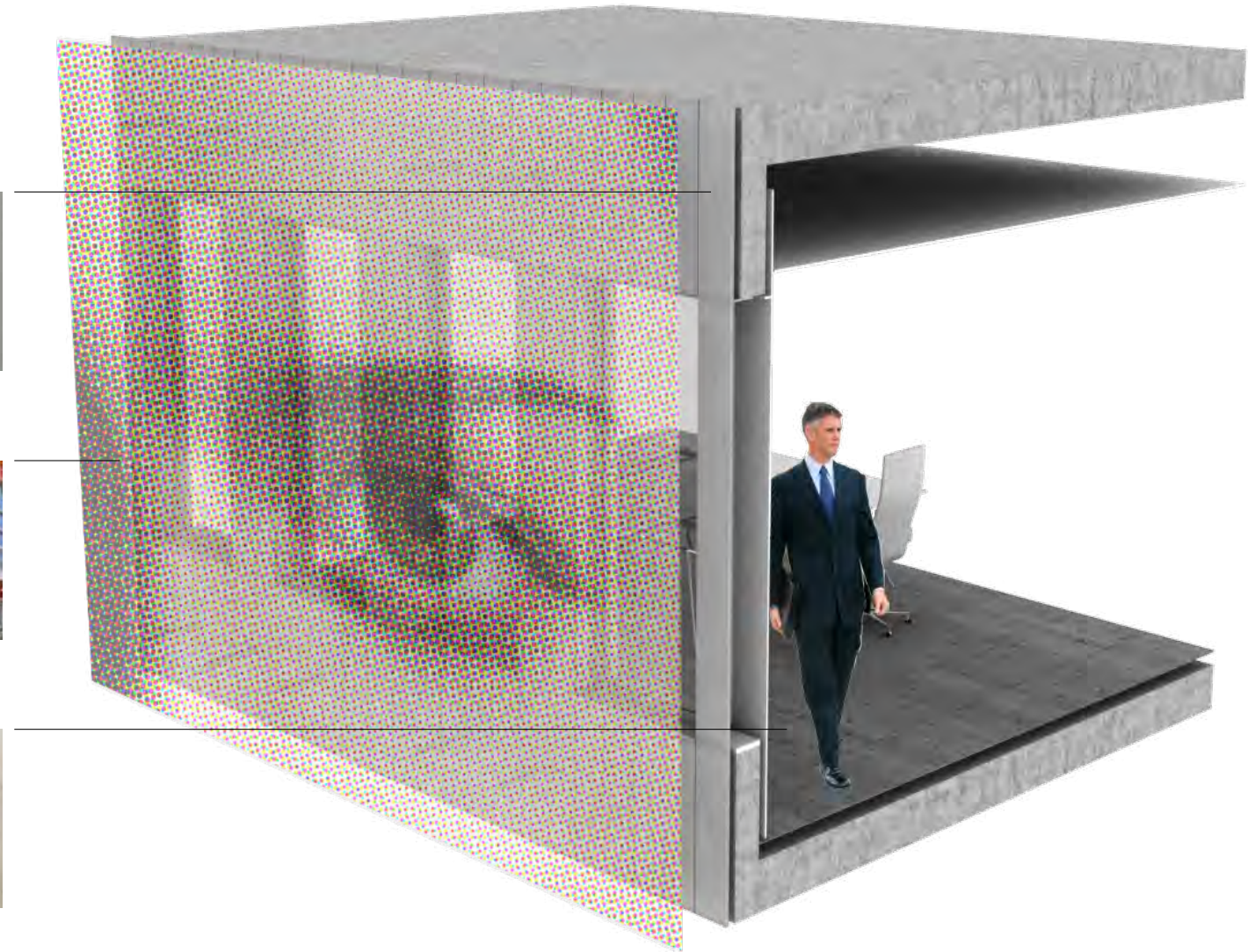
VM Zinc Vertical Interlocking
Pre-Weathered Quartz Zinc
250mm wide



GKD MediaMesh®
64% Open

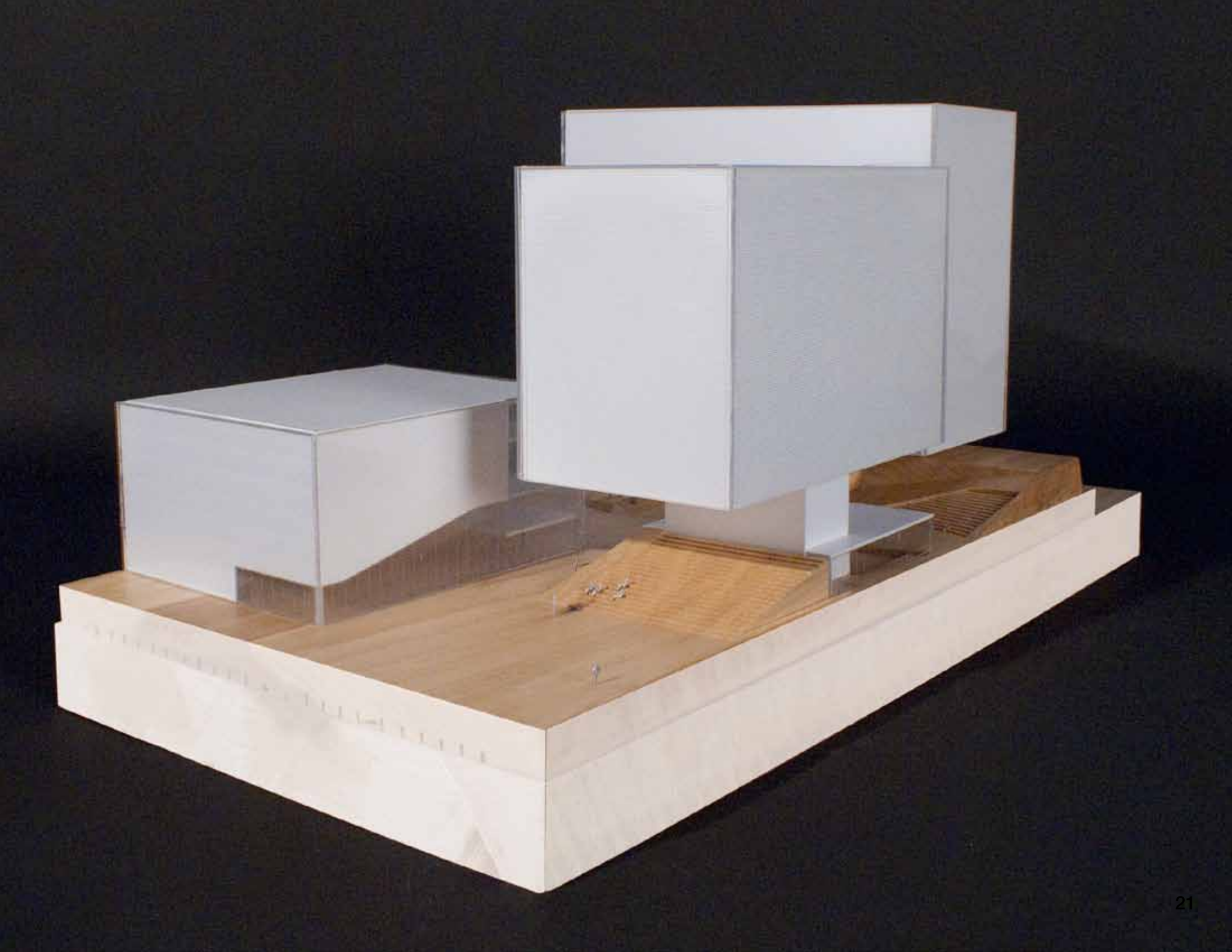


Dinsen Douglas Fir Flooring
Oil Finished
35mm x 300mm



Sectional Rendering Detail of Facade and Interior (Current Page)

1:250 Model Overall (Opposite Page)



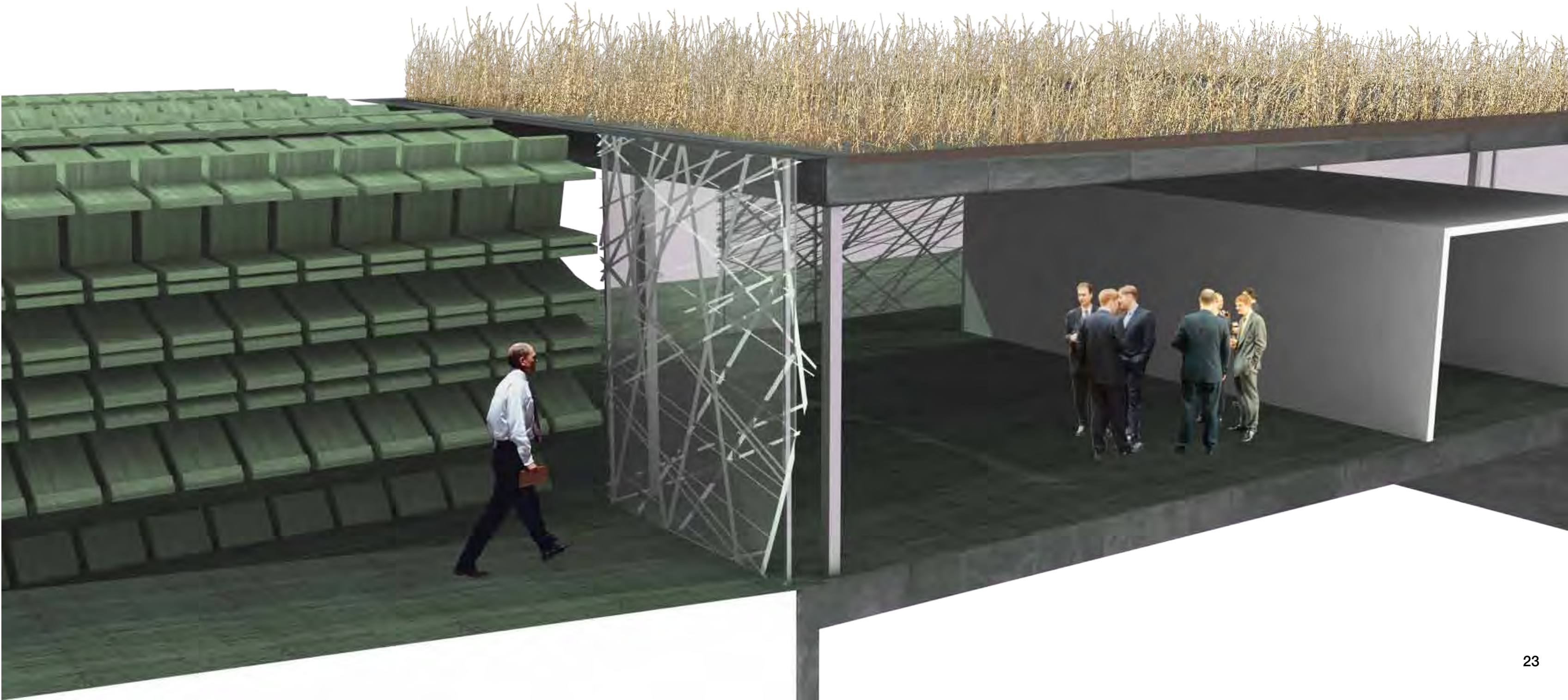
RARE SPACE

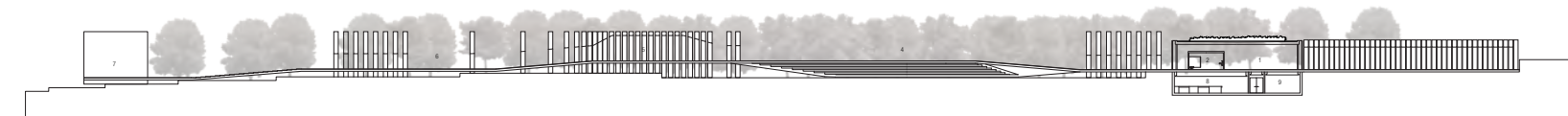
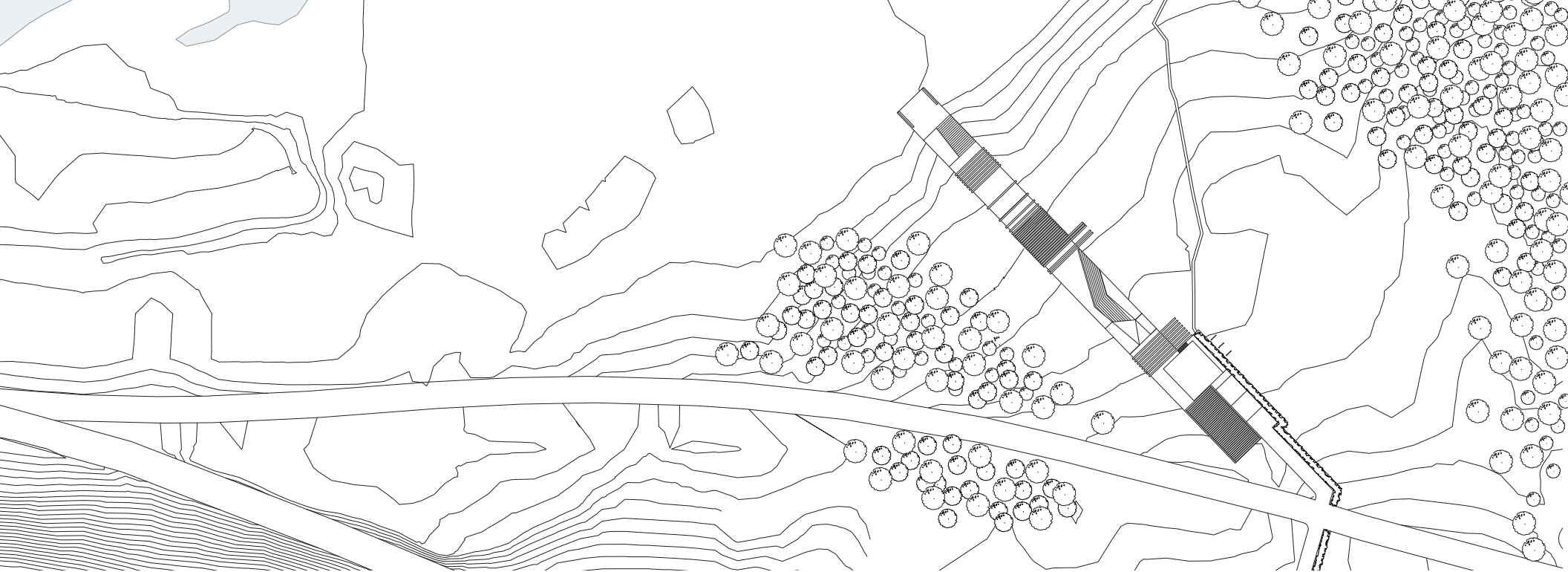
Floor, wall and ceiling all contribute to how a space is enclosed. The atmosphere of the space is prescribed by the character of the thing defining it.¹

rareSpace is defined by a series of thresholds and boundaries. The thresholds and boundaries are materialized as screen and plan. The screens derive their formal character from the experience of tracing a path through the dense overlapping of trees in a forest and the structural benefits of cross bracing. These thresholds define the space within themselves (when presented as a cluster) as well as local the places of program between them, as in the case of the main performance space. Similar to how the screens shift to adapt to program so too does the ground plan to accommodate specific program requirements.

The space is also located over time by the growth of the flanking forests. With the introduction of the project not only does the forest move towards and fill in the field, but due to its presence and the nature of forest succession, also moves out from the project. The built artifact acts as a generator of landscape. As time passes the primary circulation route is amplified as movement opposite the grain of the project increases as its object quality dissolves into the forest.

1. Christian Norberg-Schultz.1980. *Genius Loci: Towards a Phenomenology of Architecture* [New York] Rizoli. 11-18



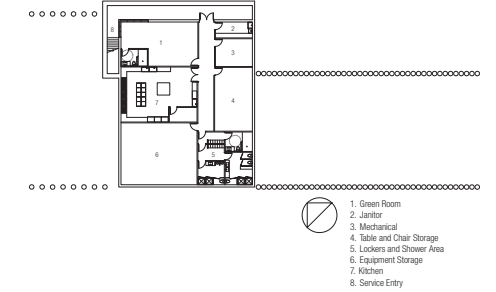
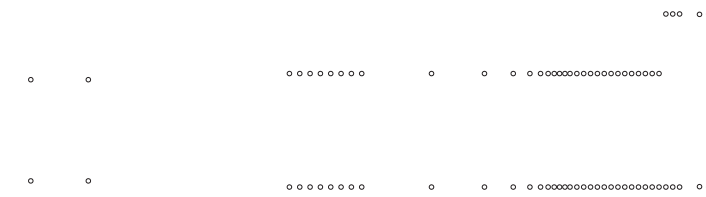
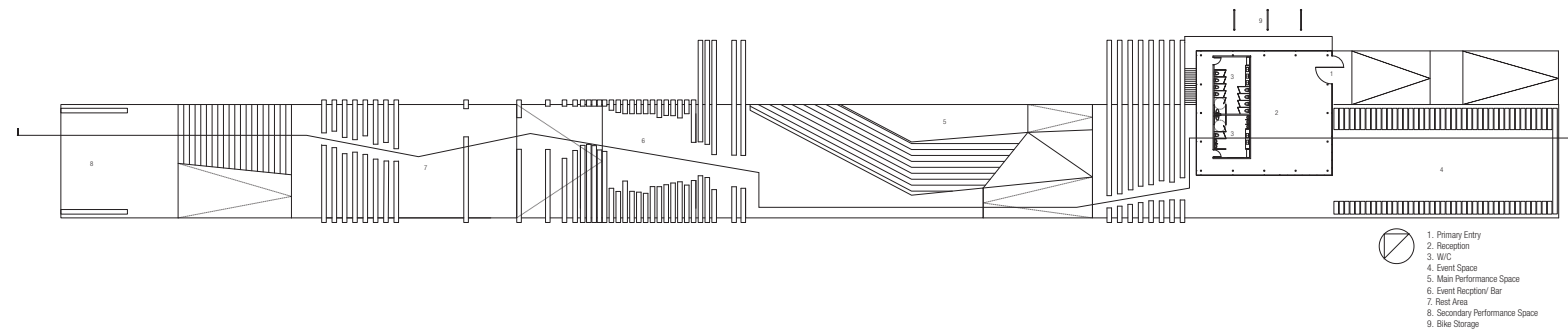


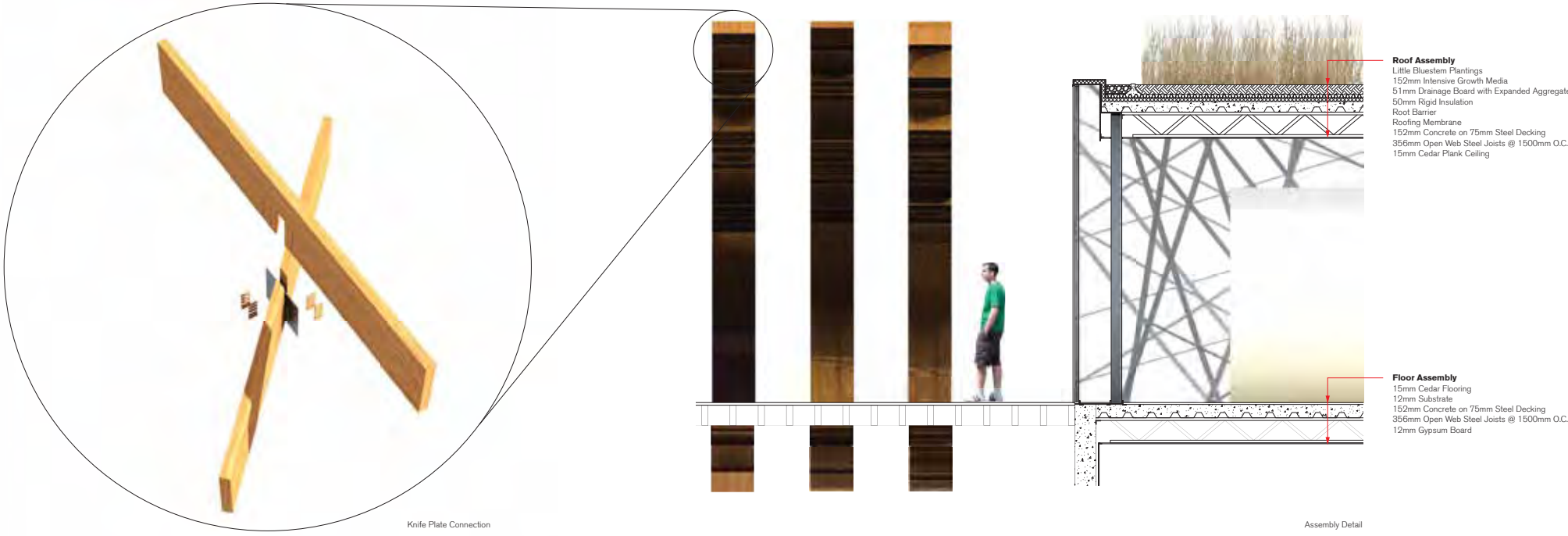
1. Reception
2. W/C
3. Event Space
4. Main Performance Space
5. Event Reception/ Bar
6. Rest Area
7. Secondary Performance Space
8. Kitchen
9. Table and Chair Storage



Sectional Rendering Entry into Pavilion (Previous Page)
Site Plan (Current Page)
Section (Opposite Page)
Experiential Section (Throughout)







MUSAGETES+SIG
RARE SITING SPRINGBANK COMMONS COMPETITION

How does one approach time. The shifting of the seasons, the change of a framework, the evolution of a system – all transform the landscape they exist within, subsequently changing themselves. The new home for Musagetes + SiG is intended to be a context to encourage change. A place for the public to gather, a place for Musagetes + SiG to carry out their work and grow over time, an icon signifying the entrance into the changing urban fabric of Galt, and a framework for the succession landscape plan of rare to take root.

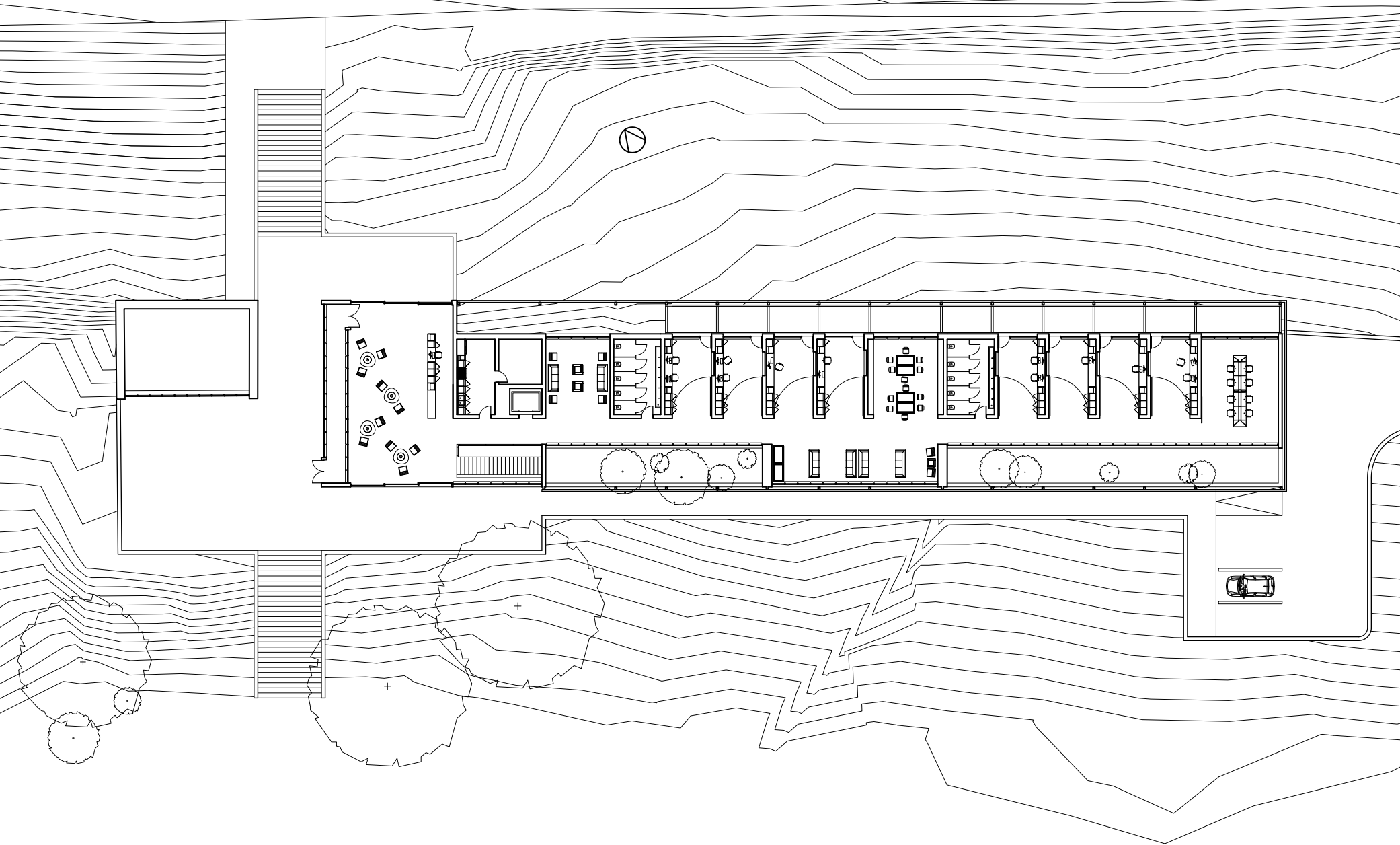
Adaptive reuse and personal experience lie at the heart of the scheme. The office space is semi-private with the support functions in the public areas of the building. The semi-private office space gives the occupant full control over his or her environment, allowing them to close the office off, or have it open as to allow for interaction cross fertilization of ideas.

The intent is for the large glass doors on the south side of the office to be left open, as frequent passage through and in front of this threshold would encourage social interaction and creative spontaneity. The several public space throughout the building are shared between Musagetes and SiG, with a large lounge space and café for the general public and staff. Small lounge spaces anticipate brief activity: printing, a coffee, or quick collaboration. The large spaces accommodate meetings, public charrettes, group work, and communal lunch. Space sharing reinforces the social nature of these spaces, and their dispersion along the length of the east-west corridor allows for different levels of interaction.

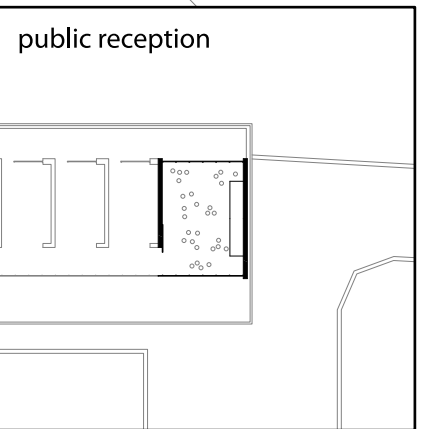
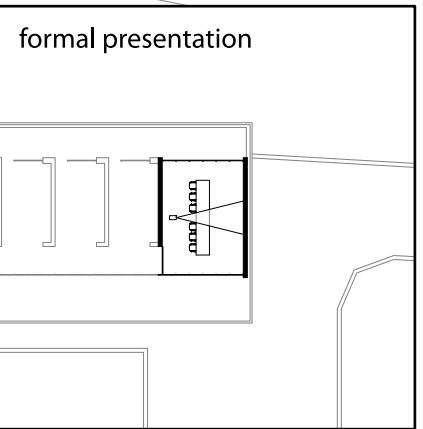
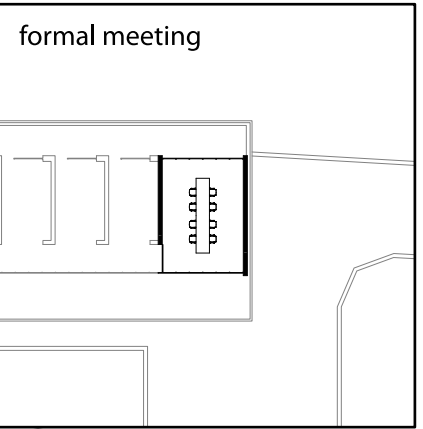
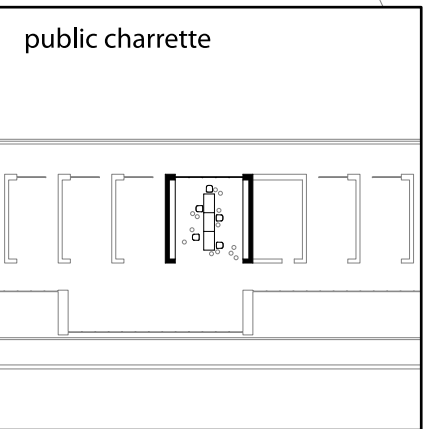
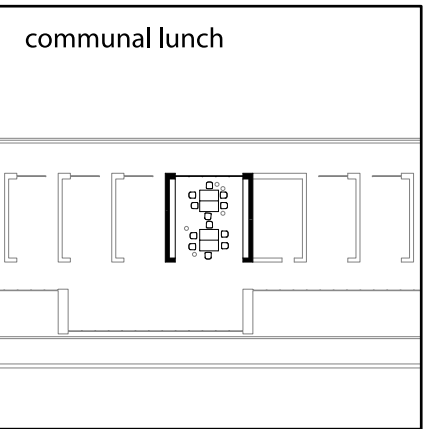
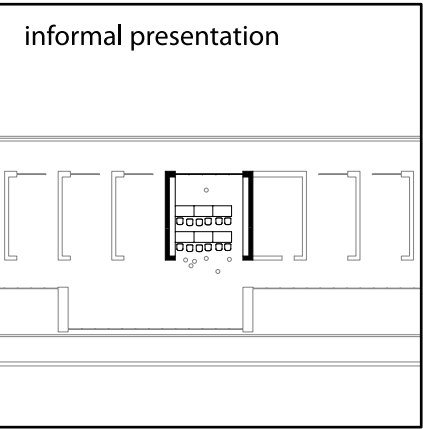
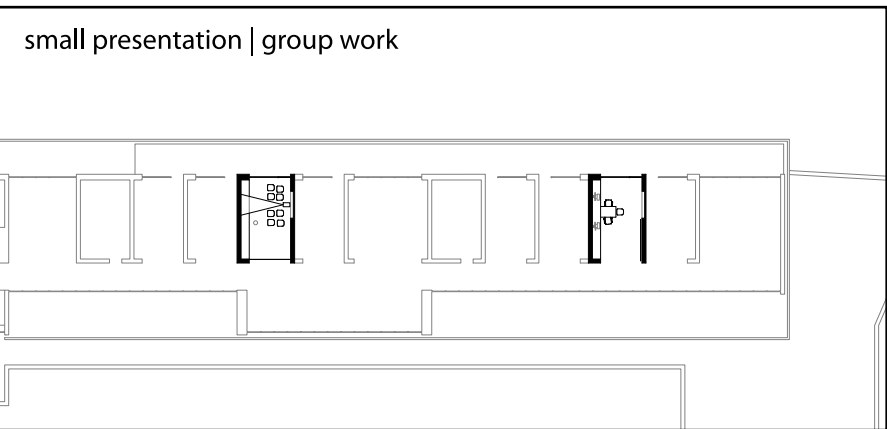
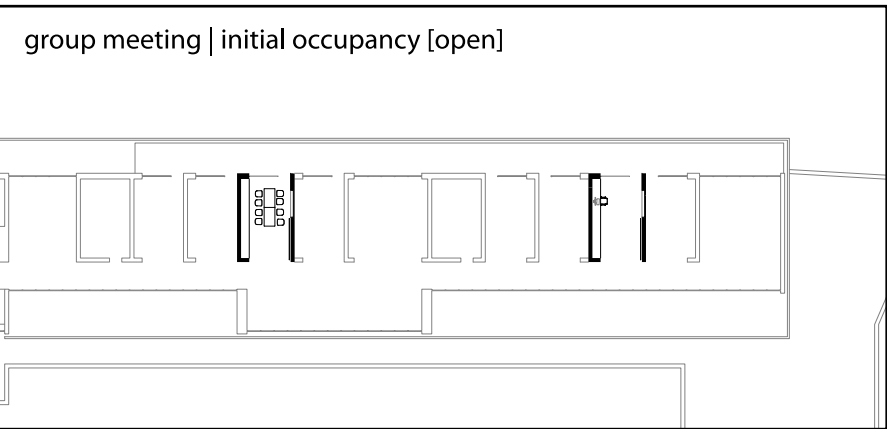
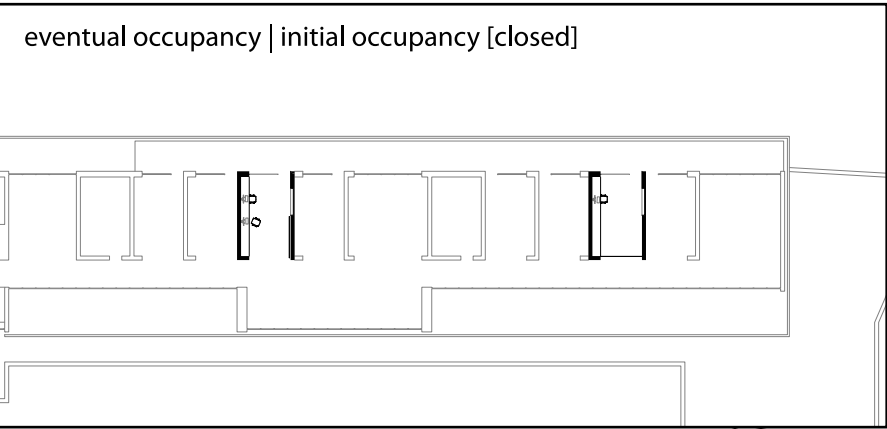
The new Musagettes and SiG center on the rare Conservation site is a synthetic landscape anticipating use and change.

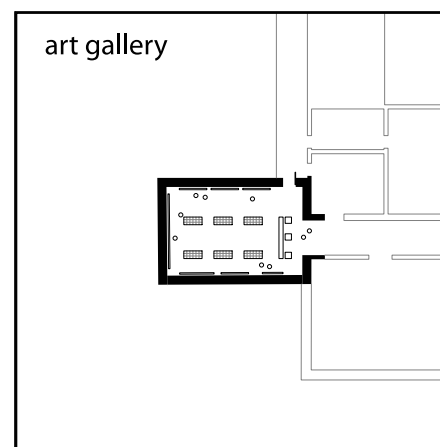
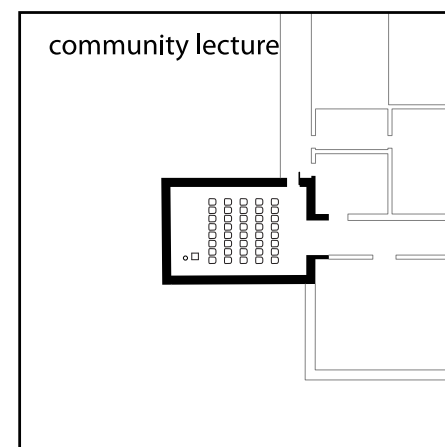
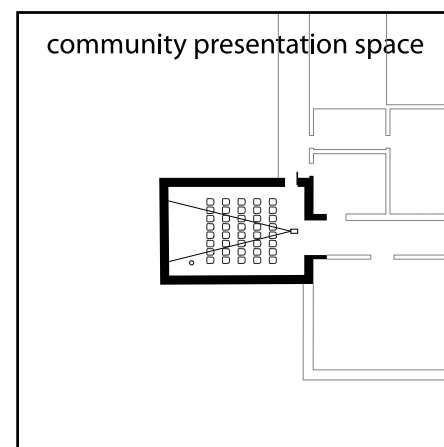
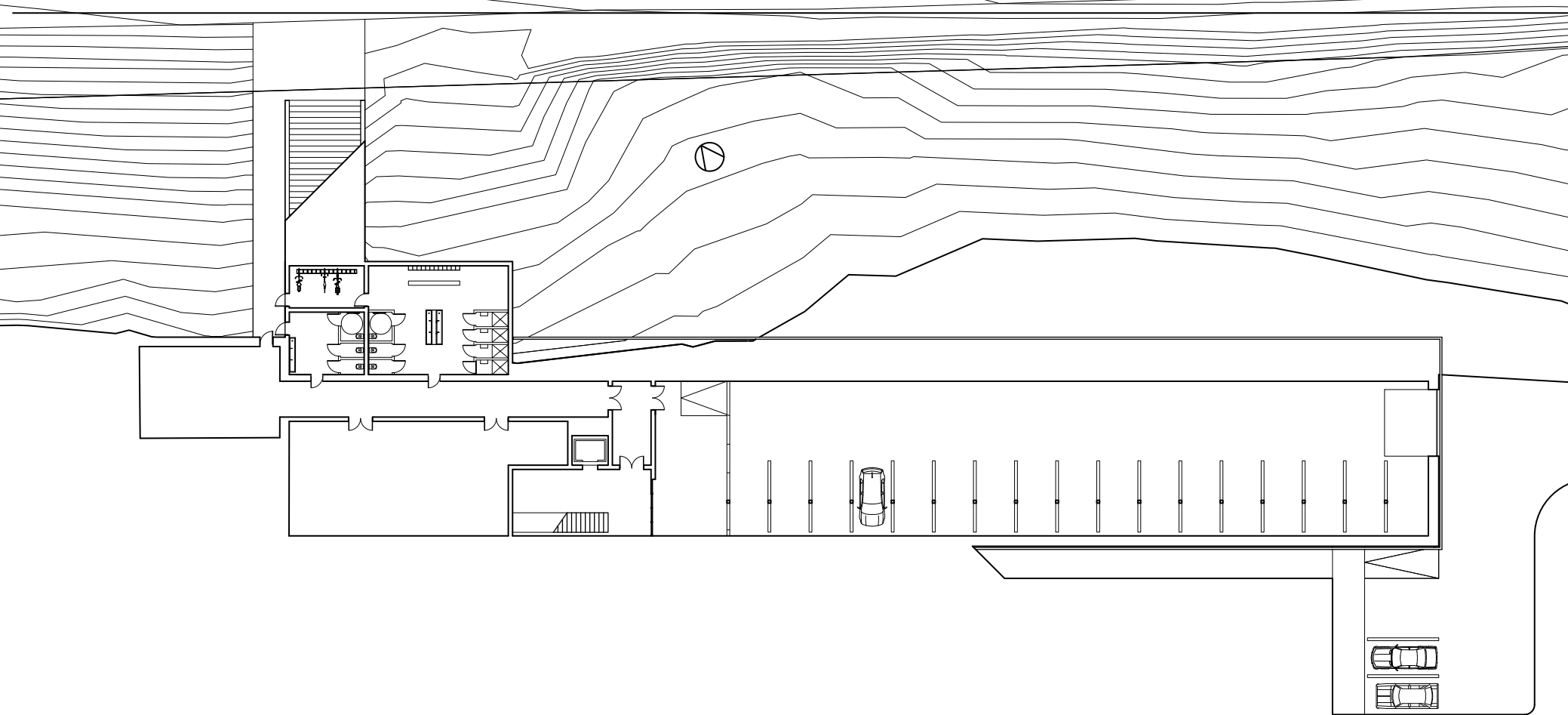
Competition Team: Patrick Burke and Dan McTavish
Competition Renderings: Dan McTavish and Brian Muthaliff





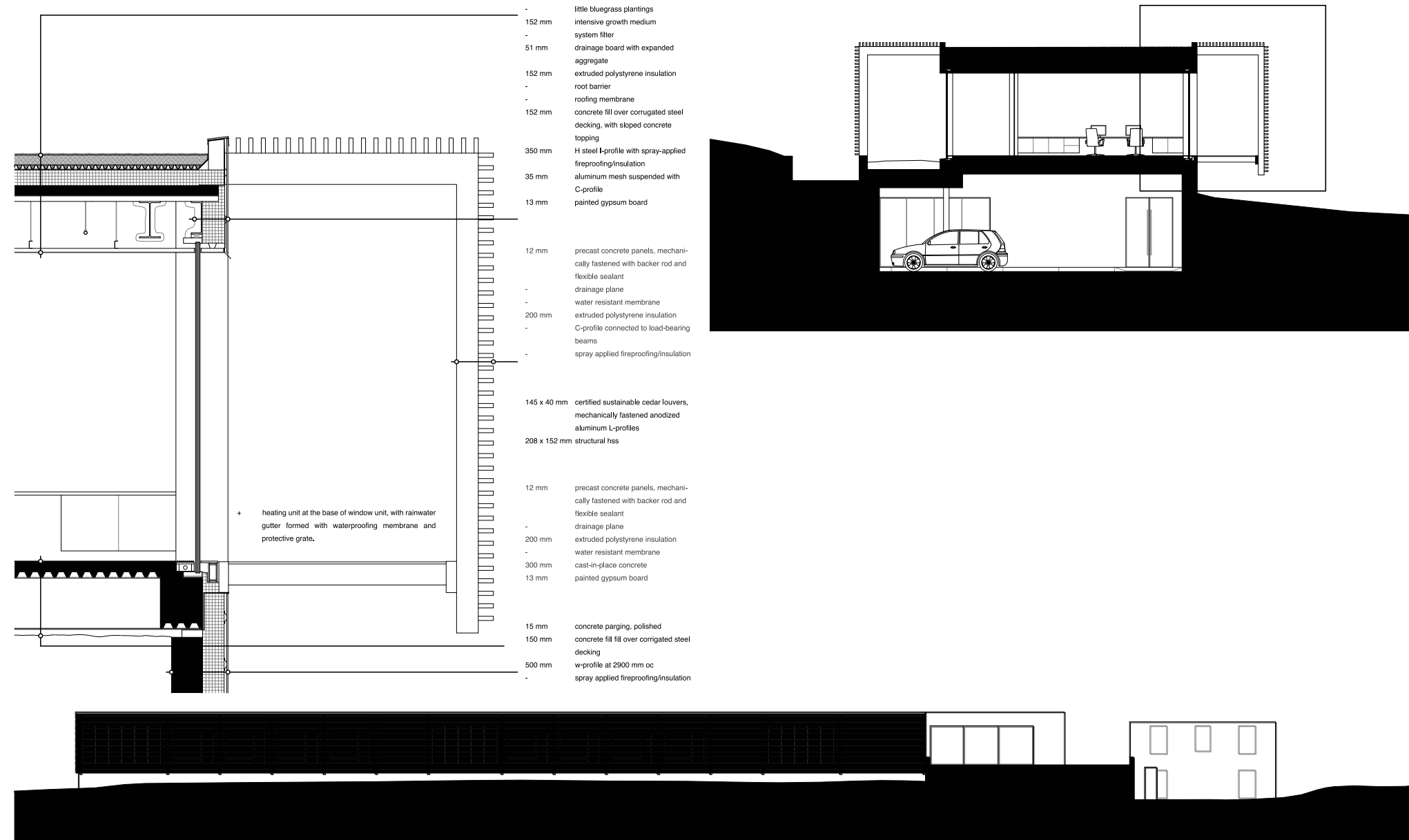
Exterior Rendering View from Road (Previous Page)
Ground Floor Plan (Current Page)
Spatial Configuration Diagrams (Opposite Page)





Below Grade Plan (Above)
Multipurpose Room Configurations (Right)
Exterior Rendering South Patio (Opposite Page)





Detail External Walkway and Louver System (Top Left)
Section Entry Ramp, External Garden, Corridor, Typical Office,
 External Walkway (Top Right)
Elevation North (Above)
Cafe and Reception Looking North (Opposite Page)



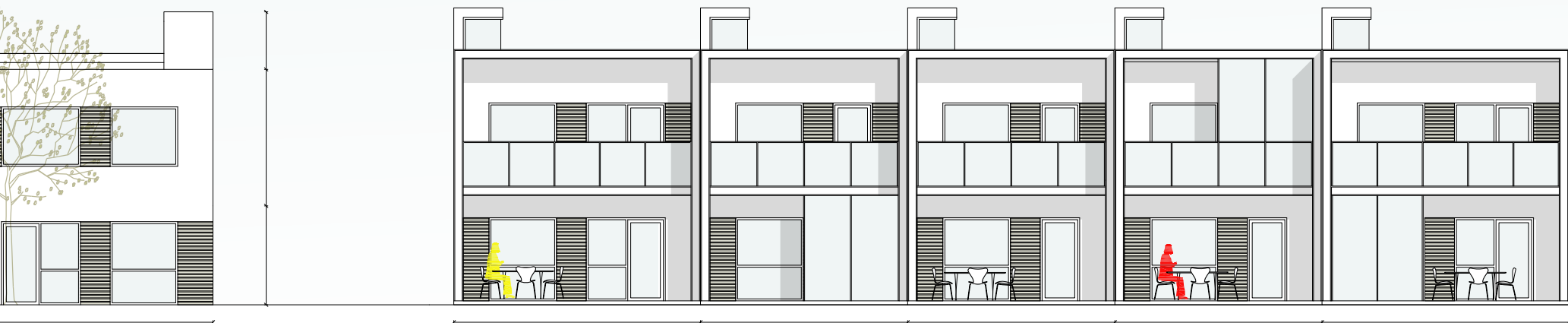
VILHELM LAURITZEN ARCHITECTS
ALMENEBOG+

Vilhelm Lauritzen Architects – VLA – is a full-service firm of architects that works with development and planning, architecture and design. A committed staff of 50 transforms knowledge, empathy and stance into good solutions.

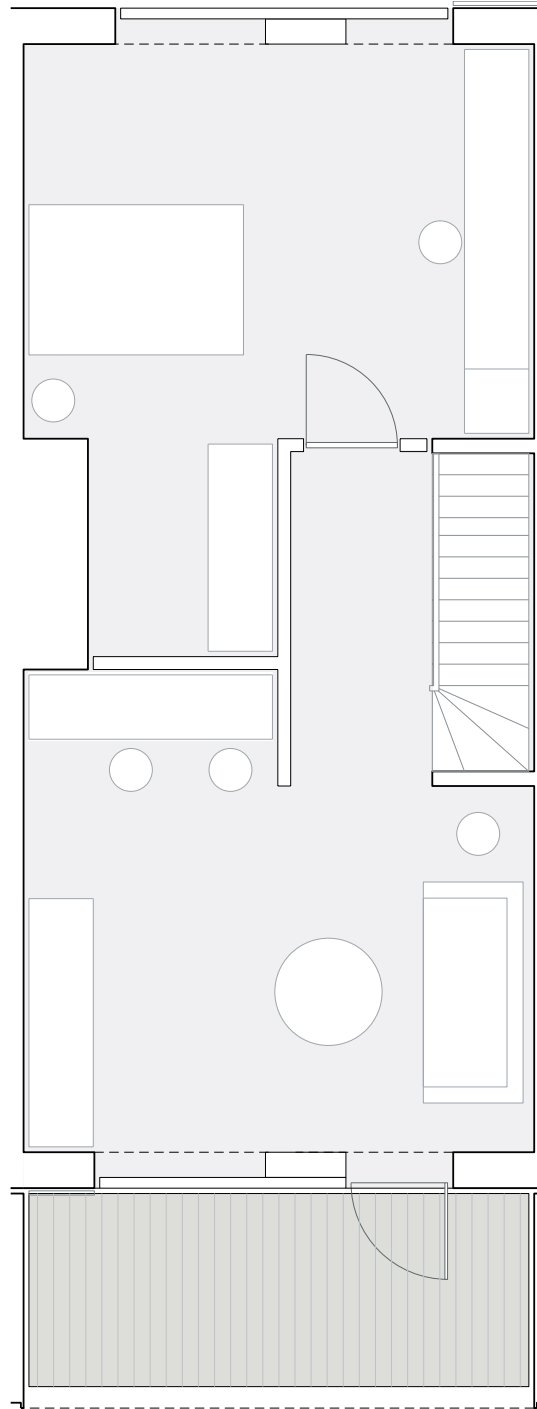
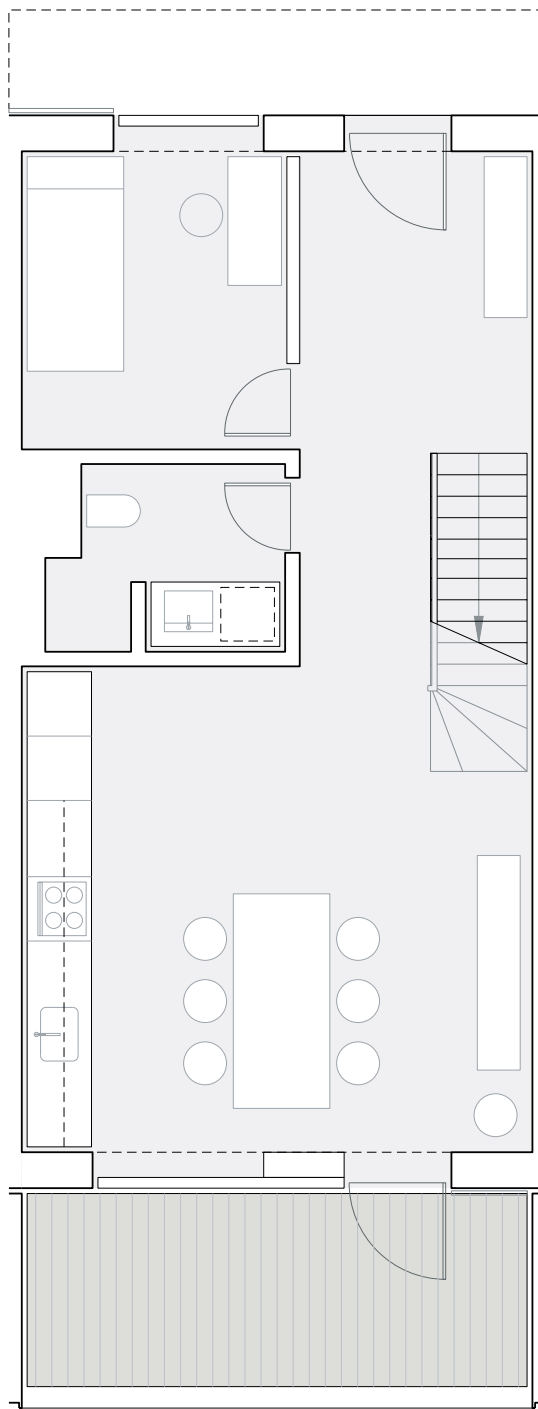
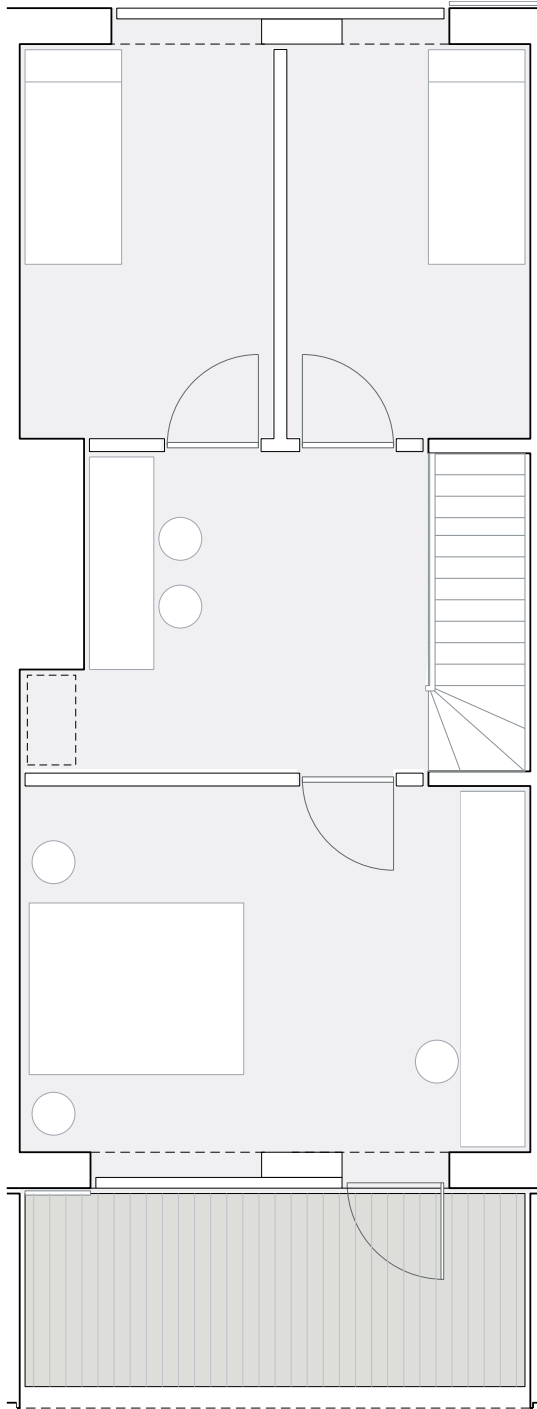
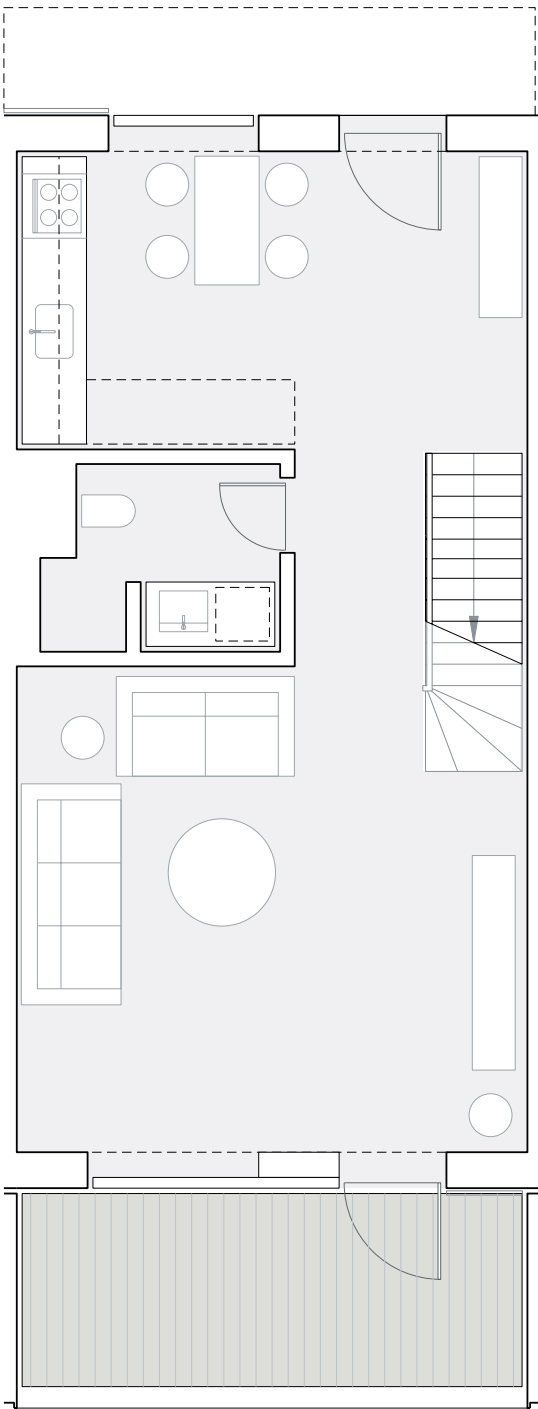
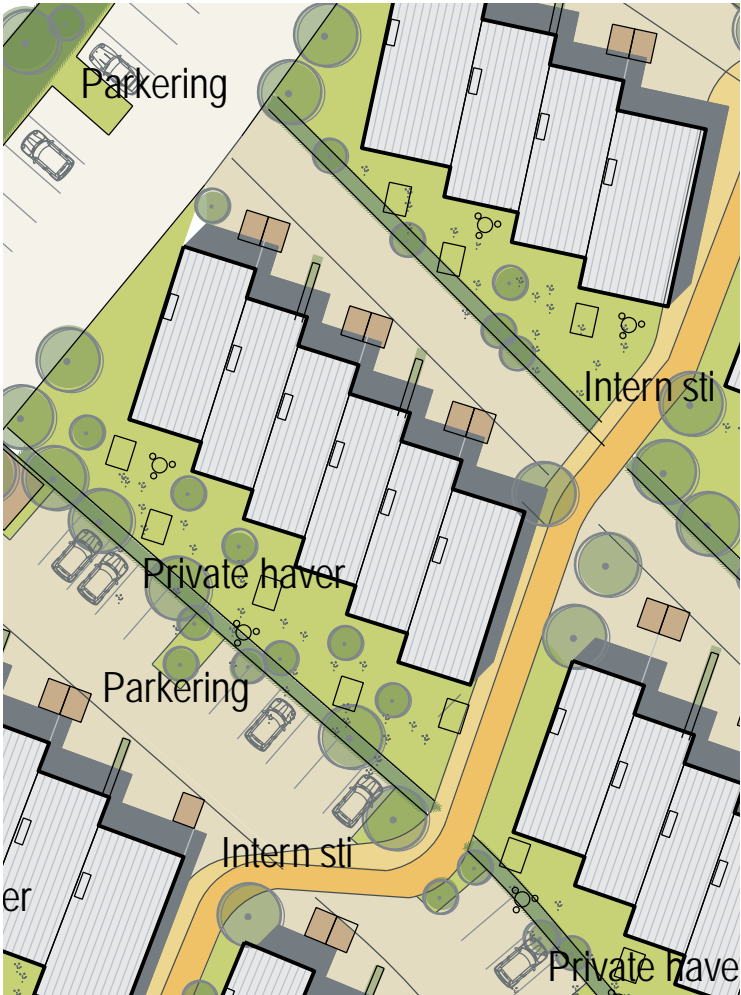
VLA's long-standing consultancy work with Danish and foreign property developers means that with our extensive experience, we can live up to the professional demands and expectations that are required for all phases of a project process in order to create value for the customer – and to achieve architecture that creates identity and meaning.

All Images property of VLA





Exterior Rendering Looking South (Previous Page)
 Elevation South (Above)
 Section (Opposite Page)



Interior Rendering (Opposite Page Top Left)
Site Fragment (Opposite Page Bottom Left)
Typical Unit Plan Ground and First Floors (Opposite Page Right)
Typical Unit Plan Variation (Left)
Exterior Rendering South (Above)

HOLSCHER ARKITEKTER

SVANEVIG HOSPICE

Holscher Arkitekter is a small office consisting of 4 partners and 5 employees.

“Holscher Architects provide services to clients in the private and public sectors. Our core competencies are: urban planning, design and detailing. Our practice has broad experience and competence within the fields of architecture, urban strategies and design, covering the entire spectrum from concept envelopment to site supervision and construction management. We provide a broad range of advisory services relating to architecture as well as assistance within a number of associated specialist areas ranging from programming, functional analyses, planning and building design to financial management and quality control of construction projects. Our practice has a prominent profile, and we carry out assignments with conceptual zeal and financial profit.

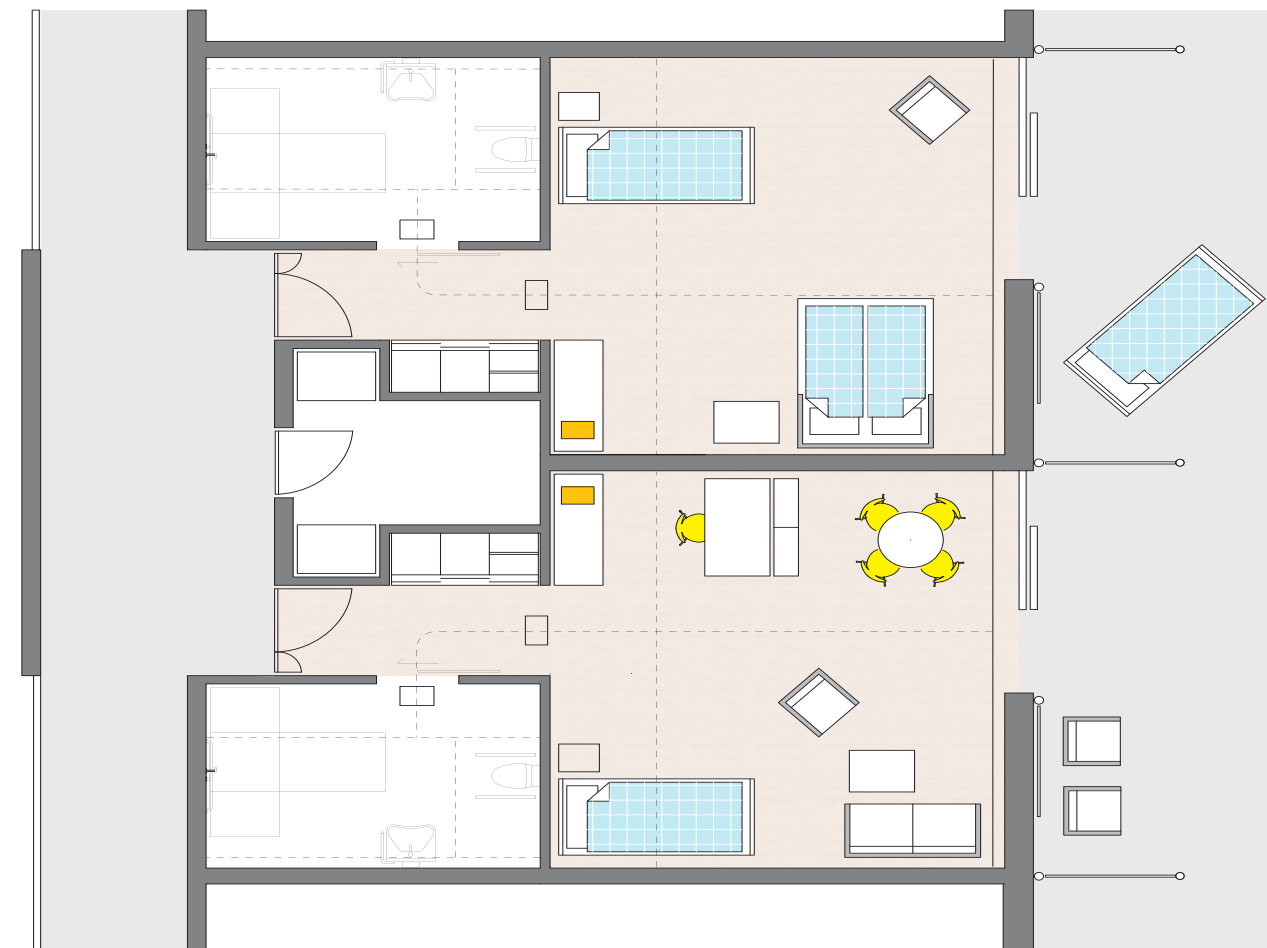
We were recently awarded the “Lille Arne” award by the Architects’ Association of Denmark, which is given to special talents in Danish architecture.”

While at Holscher Arkitekter my duties were focused around 4 projects: Svanevig Hospice, Bigom Development, and Area F of the Tankefuld masterplan.

The Scanevig Hospice was a proposal as part of an invited competition. When I began work on the project the concept had been established and several early iterations of the project already completed. My task was, with one of the partners, to further refine the plan and materiality of the project. Given that it was a hospice, the interior layout of the private rooms was important but what became even more interesting were the public common spaces and what quality they should possess. Once the plan was decided, I was responsible for executing and refining the landscape plan. Finally, it was my duty to create all the presentation drawings and graphics and to lay out the panels of the competition.

All Images property of Holscher Arkitekter





Exterior Rendering Finishes (Title Page)
 Site Plan (Opposite Page)
 Typical Unit Plan (Top Left)
 Exterior Rendering Approach (Bottom Right)

**KUWABARA PAYNE MCKENNA
BLUMBERG ARCHITECTS
THE ROYAL CONSERVATORY OF MUSIC**

During the period from January to May 2008 I had the privilege to work at Kuwabara Payne McKenna Blumberg Architects on The Royal Conservatory of Music. The project consists of a new Telus Center for Performing Arts within which is the 1,150 seat Koerner Hall as well as state of the art studios and the renovation of what is now called Ihnatowycz Hall.

During this period the project was in its third phase, which encompassed interior finishing of both the Telus Center and Ihnatowycz Hall. I had the opportunity to work on all aspects of Phase 3 to some extent including extensive work on the 3B Tender set which comprised of Koerner Hall and adjacent spaces. This unique opportunity to work on a project that was phased in such a way meant that I not only had the chance to produce construction documents and complete red lines, but hear client feed back and be involved in the design and development of parts of the interior.

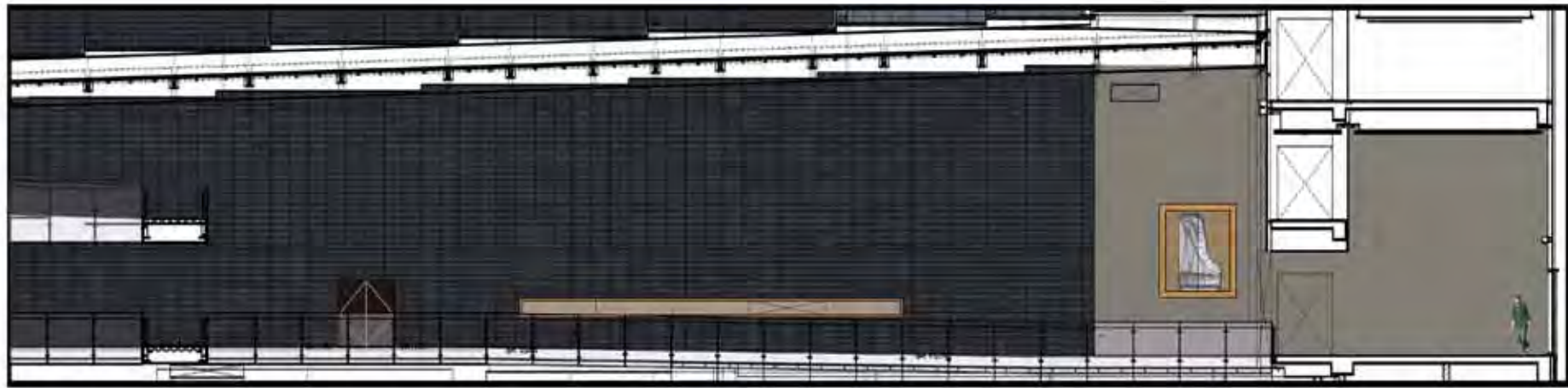
Presented here are three examples of such design development that took place. At the top is an illustration showing options for the southern wall of the promenade with and without stained oak panelling. On the right at the top is an image of the north east corner under construction juxtaposed with a model of the same corner intended to study potential options for a feature wall. Finally the images at the bottom show a span of three days where an idea of office partitions in Ihnatowycz Hall went from sketch to drawing to 3D model for client approval to built mock up on site

All Images property of KPMB





Wood Wall



Stone Wall

RCM North East Wing DMT (Previous Page)
 Great Court Wall Options (Above)
 Interior Office Partition Option (Left)
 Interior Office Partition Mock Up (Middle)
 1:50 Model North East Corner (Far Right)
 Great Court Wall Under Construction DMT
 (Opposite Page)



DAN MCTAVISH

Candidate for Bachelor of Architectural Studies Honors, Co-op Program
Faculty of Engineering, University of Waterloo

208 Glenforest Road
Toronto, Ontario
M4N 2A2
Canada

Mobile. +1 226 339 8150
Home. +1416 487 8734
Email. dmctavis@uwaterloo.ca

